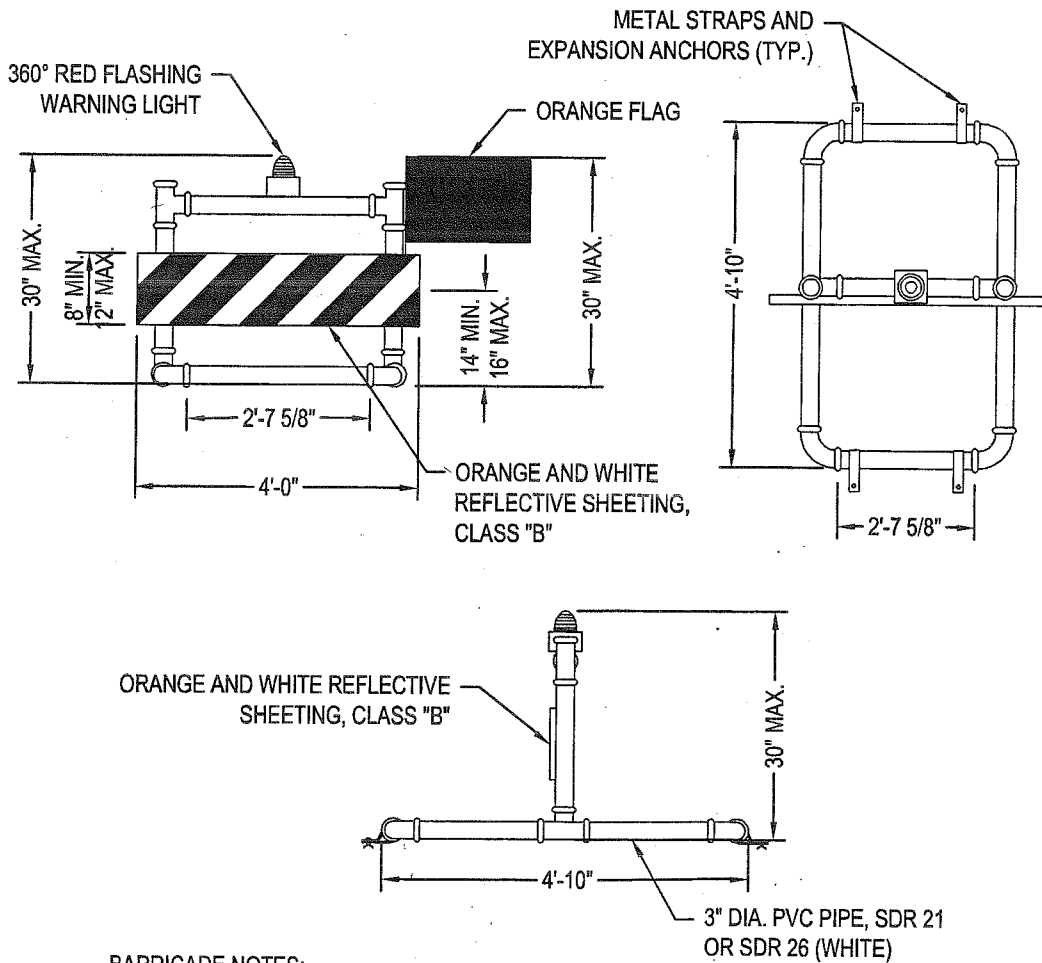


9. THIS CONTRACT DOES NOT ALLOW FOR PRICE INCREASES DUE TO ESCALATION IN COST OF UNIT BID ITEMS. THE CONTRACTOR SHALL TAKE THIS INTO CONSIDERATION WHEN PREPARING UNIT PRICES FOR BID.
10. PRIOR TO THE START OF CONSTRUCTION, THE CONTRACTOR SHALL STRIP AND STOCKPILE ALL MATERIAL SUITABLE FOR TOPSOILING.
11. ALL SPOIL SHALL BE DISPOSED OF OFF-SITE AT THE CONTRACTORS EXPENSE.
12. ALL SOIL EROSION AND SEDIMENT CONTROL DEVICES AND MATERIALS SHALL BE IN PLACE PRIOR TO BEGINNING EARTHWORK OPERATIONS AND SHALL BE MAINTAINED UNTIL THE NEW SLOPES ARE STABILIZED WITH SEEDING AND/OR SLOPE PROTECTION.
13. ALL ELECTRICAL WORK SHALL CONFORM TO APPLICABLE LOCAL, STATE AND NATIONAL ELECTRICAL CODES.
14. THE ELECTRICAL CHARACTERISTICS OF PROPOSED EQUIPMENT SHALL BE VERIFIED TO BE COMPATIBLE WITH EXISTING EQUIPMENT MANUFACTURER PRIOR TO INSTALLATION.
15. ITEMS OF SPECIFIC MANUFACTURE SHALL BE INSTALLED IN STRICT ACCORDANCE WITH MANUFACTURER'S PRINTED INSTRUCTIONS AND OR MANUFACTURER'S REPRESENTATIVE DIRECTIONS.

B4 GENERAL NOTES

NOT TO SCALE



BARRICADE NOTES:

1. ANCHOR BARRICADES WITH SAND BAGS TO PREVENT DISLODGING.
2. NEAR THRESHOLDS AND AREAS OF JET BLAST, USE METAL STRAPS AND EXPANSION ANCHORS TO ANCHOR BARRICADE TO PAVEMENT.
3. FLAT, BIDIRECTIONAL WARNING LIGHTS WILL NOT BE ACCEPTABLE.
4. CONTRACTOR TO INSTALL AN ORANGE FLAG IN ACCORDANCE WITH AC 150/5370-2E.
5. BARRICADES SHALL BE SPACED 8' MAX. O.C.
6. EXACT LOCATIONS SHALL BE DETERMINED DURING CONSTRUCTION.

A4 BARRICADE DETAIL

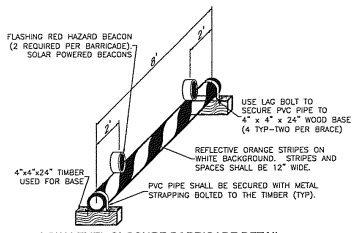
NOT TO SCALE

B
 A
 Feb 08, 2011 - 8:24am
 F:\Project\147 - CITY OF OLEAN\147012 - Fuel Facility Replacement\OLEAN AIRPORT\CADD\Sheet Files\G-101.dwg

MARK	DATE
PROJECT NO.	
DATE:	
DRAWN BY:	
DESIGNED	
CHECKED E	
NO ALTERA	
EXCEPT AS	
7209 SUBC	
EDUCATION	

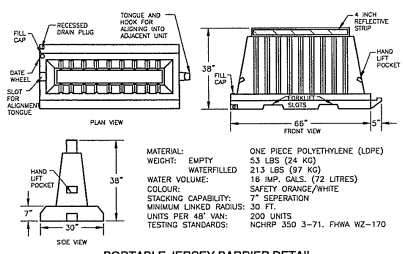
CITY OF OLEAN

GEI



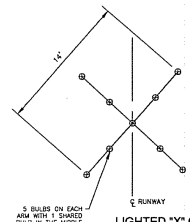
LOW LEVEL CLOSURE BARRICADE DETAIL
N.T.S.

- NOTES:**
1. CONTRACTOR SHALL SUPPLY RED HAZARD BEACON LIGHTS FOR THE OWNER FURNISHED/CONTRACTOR MAINTAINED BARRICADES. CONTRACTOR SHALL MAINTAIN ALL HAZARD BEACON LIGHTS AND BARRICADES THROUGHOUT PROJECT DURATION.
 2. BEACON LIGHTS SHALL BE SOLAR RECHARGEABLE.



PORTABLE JERSEY BARRIER DETAIL
N.T.S.

NOTE: ALL JERSEY BARRIERS SHALL BECOME PROPERTY OF TCRA UPON COMPLETION OF PROJECT.



- CLOSURE MARKER NOTES**
1. CONTRACTOR SHALL PLACE AIRPORT FURNISHED LIGHTED "X" AT EACH END OF CLOSED RUNWAY ON TOP OF THE PAINTED NUMBER DESIGNATOR FOR EACH END (DURING PHASE A WORK ONLY). OWNER TO DE-ENERGIZE RUNWAY LIGHT CIRCUIT AS APPLICABLE.
 2. THE CONTRACTOR SHALL MAINTAIN THE LIGHTED "X'S" UNTIL COMPLETION OF THE RUNWAY CLOSURE AND REMOVE AT END OF CLOSURE WHEN DIRECTED BY ENGINEER. SEE SPECIFICATION SECTION 55-1 FOR MAINTENANCE REQUIREMENTS AND PAYMENT INFORMATION.
 3. CONTRACTOR IS ENCOURAGED TO INSPECT CONDITION OF LIGHTED "X'S" DURING PRE-BID MEETING.

	DESIGNED BY: HMC DRAWN BY: SUB DATE: 05/29/07			PROJECT NO: 18740-000 DATE: 05/29/07
	PROJECT TITLE: TRI-CITIES REGIONAL AIRPORT, TN/VA TERMINAL RAMP RECONSTRUCTION - PHASE 1			PROJECT NO: 63-0285.04 DRAWING NO: GN-05
ISSUED FOR BID				SAFETY DETAILS