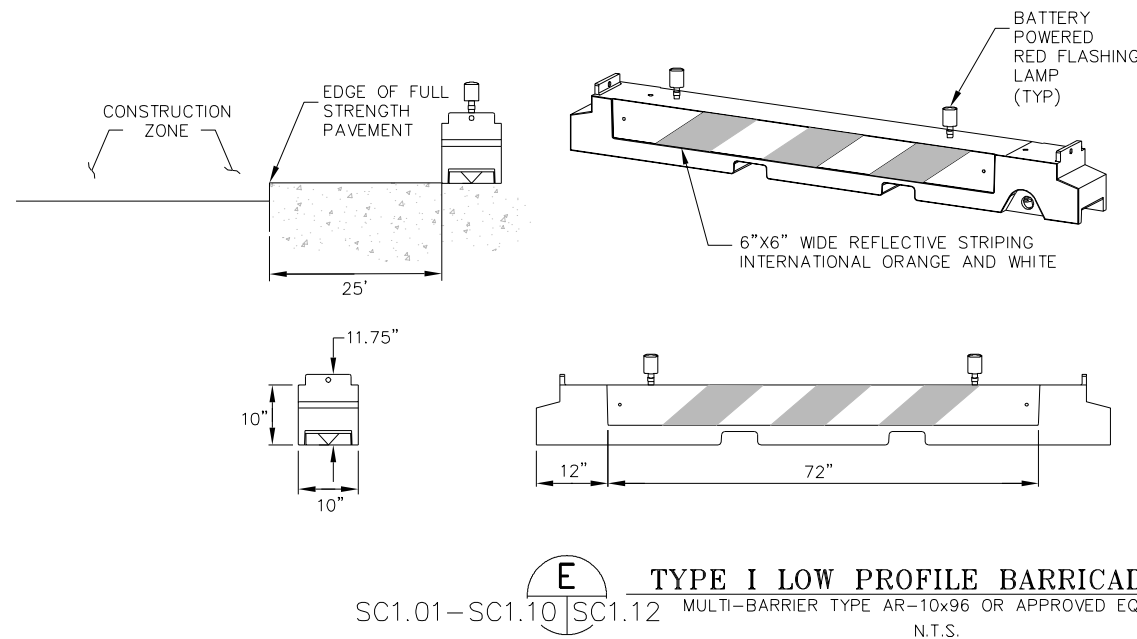


CONSTRUCTION PHASING GENERAL NOTES

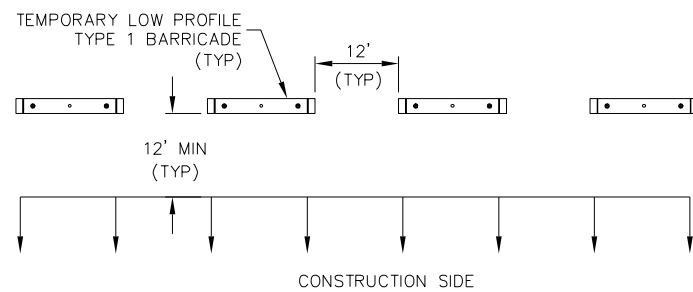
1. THE AIRPORT RESERVES THE RIGHT TO CHANGE THE ORDER OF CONSTRUCTION PHASES DURING THE PROJECT FOR OPERATIONAL PURPOSES. THE CONTRACTOR SHALL COORDINATE WITH THE SAN DIEGO INTERNATIONAL AIRPORT (SDIA) OPERATIONS PRIOR TO THE START OF CONSTRUCTION AND/OR THE COMPLETION OF EACH PHASE.
2. ALL AIRPORT OPERATIONS AREA (AOA) PAVEMENT SURFACES SHALL BE OPEN FOR AIRCRAFT OPERATIONS AT ALL TIMES OTHER THAN THE DESIGNATED CLOSURES.
3. THE CONTRACTOR SHALL BE AWARE THAT THE CONSTRUCTION WILL OCCUR ADJACENT TO AN ACTIVE TAXIWAY AND APRON AIRCRAFT APERTURES. CONSTRUCTION TRAFFIC SHALL YIELD TO ALL AIRCRAFT AT ALL TIMES. THE CONTRACTOR SHALL NOT MOVE EQUIPMENT ONTO ANY ACTIVE AOA WITHOUT AN SDIA OPERATIONS OR MAINTENANCE STAFF ESCORT. DELAYS AND PRECAUTIONS RESULTING FROM AIRCRAFT MOVEMENTS SHOULD BE EXPECTED. EXPENSES ASSOCIATED WITH ANY DELAYS ARE INCIDENTAL TO THE PROJECT.
4. PRIOR TO STARTING WORK IN ANY PHASE, ALL GUIDANCE SIGNS SHALL BE COVERED/DE-ENERGIZED, ALL TAXIWAY LIGHTING SHALL BE DE-ENERGIZED WITHIN THE WORK ZONE, ALL LEAD-IN AIRFIELD MARKINGS SHALL BE REMOVED, AND ALL BARRICADES AND TEMPORARY MARKINGS SHALL BE INSTALLED AS SHOWN IN THE PLANS AND APPROVED BY THE ENGINEER.
5. THE CONTRACTOR SHALL MAINTAIN ALL PAVEMENTS AND HAUL ROUTES THAT CROSS AIRCRAFT MOVEMENT AREAS BY MEANS OF VACUUM SWEEPING. THE CONTRACTOR SHALL HAVE AN OPERATIONAL VACUUM SWEEPER AT THE WORK AREAS AND CROSSINGS TO IMMEDIATELY REMOVE ANY FOREIGN OBJECT DEBRIS, (FOD).
6. THE CONTRACTOR SHALL COORDINATE WITH THE SDIA OPERATIONS AND MAINTENANCE STAFF TO COVER AND PROTECT ANY EXISTING GUIDANCE SIGNS AND EDGE LIGHTS AS INDICATED. DAMAGE TO SIGN AND EDGE LIGHTS SHALL BE REPLACED AT THE CONTRACTOR'S EXPENSE.
7. THE CONTRACTOR SHALL PROVIDE AND MAINTAIN BARRICADES, LIGHTS, AND FLAGS FOR RUNWAY/TAXIWAY CLOSURES AS INDICATED ON THE INDIVIDUAL PHASING PLANS AND DETAILS. UPON THE COMPLETION OF EACH PHASE, THE CONTRACTOR SHALL REMOVE THE BARRICADES AND UNCOVER SIGNS AND EDGE LIGHTS.
8. HAUL ROUTE LOCATIONS VARY FOR EACH PHASE AS INDICATED ON THE INDIVIDUAL PHASING PLANS. ROUTE AND LOCATION MAY NEED TO CHANGE DUE TO OPERATIONAL NEEDS. CONTRACTOR SHALL ADJUST AS REQUIRED FOR AIRFIELD OPERATIONS. THE CONTRACTOR SHALL REPAIR ANY DAMAGE TO THE AIRSIDE AND LANDSIDE HAUL ROUTES UPON COMPLETION OF THIS PROJECT OR DURING THE PROJECT WHEN DEEMED NECESSARY BY SDIA OPERATIONS, NON-PAY ITEM (NPI).



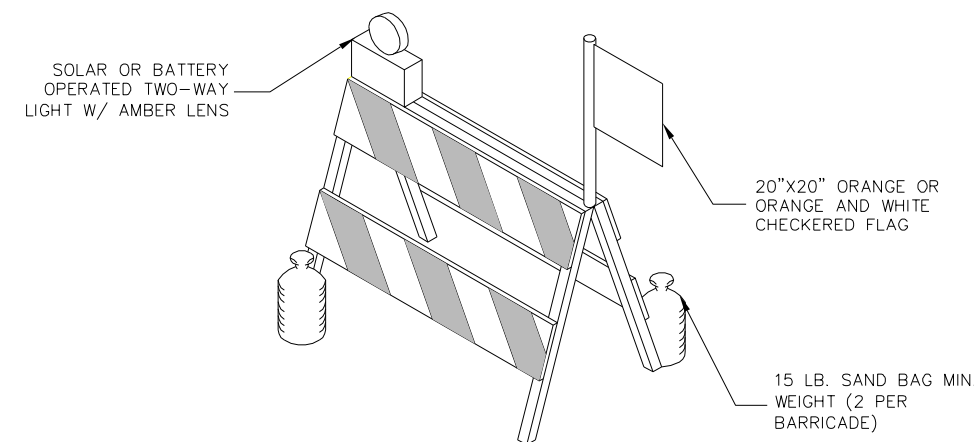
NOTES:

1. CONTRACTOR SHALL BE RESPONSIBLE FOR MAINTAINING PROPER POSITIONING OF ALL BARRICADES.
2. SANDBAGS AND/OR ANCHORS MAY BE REQUIRED TO HOLD THE BARRICADES IN PLACE WHERE EXPOSED TO JET BLAST. SANDBAGS AND ANCHORS ARE INCIDENTAL TO THE ITEM.
3. 12' MAXIMUM SPACING BETWEEN BARRICADES.
4. FLASHES TO BE BATTERY OPERATED. LENS TO BE RED AND BE ABLE TO ROTATE 90°. FLASHERS MUST BE AT LEAST 5 CANDELAS EFFECTIVE INTENSITY AND FLASH AT A RATE WITHIN 55 TO 75 FLASHES PER MINUTE.
5. FACING OF BARRICADE TO BE COVERED WITH REFLECTIVE TAPE OR PAINT.
6. BARRICADES TO BE PLACED WITH A MINIMUM OF 10' SPACING ALONG OPERATIONAL PAVEMENT ADJACENT TO CONSTRUCTION AS DIRECTED BY THE AIRPORT. ALTERNATE FLASHER LENSES SO THAT EVERY OTHER LENS IS ROTATED 90°. *UNLESS OTHERWISE APPROVED.*

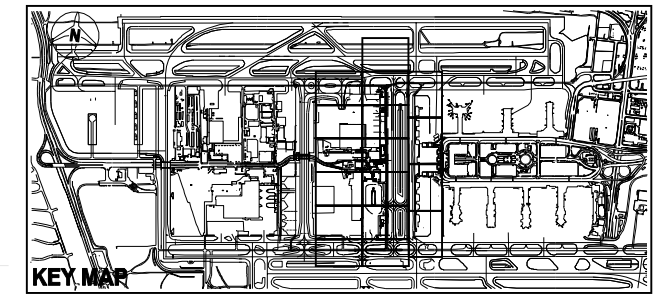
E TYPE I LOW PROFILE BARRICADE
SC1.01-SC1.10 | SC1.12 MULTI-BARRIER TYPE AR-10x96 OR APPROVED EQUAL
N.T.S.



A BARRIER PLACEMENT PLAN
SC1.01-SC1.10 | SC1.12 NO TYPE 2 BARRICADES
N.T.S.



D TYPE II BARRICADE - 'A' FRAME WITH FLAG
SC1.01-SC1.10 | SC1.12 N.T.S.



ENGINEER STAMP:			
NO.	DESCRIPTION	CHK'D	APP'D DATE

Hatch Mott MacDonald
© 2011 KIMLEY-HORN AND ASSOCIATES, INC.
765 The City Drive, Suite 400, Orange, California 92668 (714) 939-1030
Kimley-Horn and Associates, Inc.
Los Angeles World Airports

LAX **ONT** **MD** **KMM**

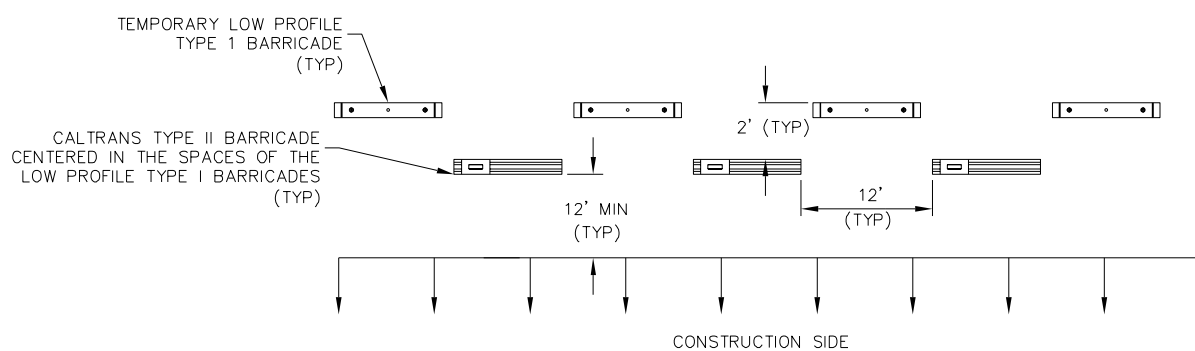
TAXILANE T

STAGE CONSTRUCTION DETAILS

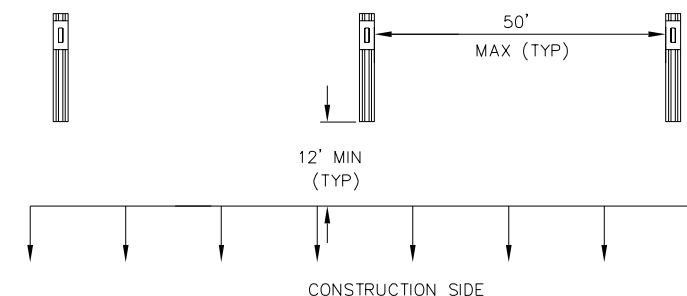
LOS ANGELES INTERNATIONAL AIRPORT

SUBMITTED BY		APPROVED BY	
ASST. CHIEF AIRPORTS ENGINEER		CHIEF AIRPORTS ENGINEER	
DRAWN	CHECKED	PLAN SET NUMBER	SHEET
SCALE	DATE	DWG NO.	
FILE NAME	xx/xx/xx		

XXXXXXXXXX



B BARRIER PLACEMENT PLAN
SC1.01-SC1.10 | SC1.12 INCLUDING TYPE 2 BARRICADES
N.T.S.



C BARRIER PLACEMENT PLAN
SC1.01-SC1.10 | SC1.12 NO TYPE 1 BARRICADES
N.T.S.