

## MB350 Barrier



The CrashGard is the recommended End Treatment for the MB350 Barrier.

[www.plasticsafety.com](http://www.plasticsafety.com)

### Features:

When equipped with the MB350 Kit, the MB350 barrier prevents vehicular penetration of a work zone. The portable barrier system performs many of the functions of concrete barriers and other such devices used to control, direct, channel and stop vehicular traffic for purposes of containment and/or safety, but the MB350 is safer for motorists than concrete in a crash. Easily installed, the MB350 barrier system enhances safety in less time than moving concrete road barriers.

### Deployment:

The minimum Length Of Need (LON) for NCHRP Report 350 TL3 compliance must be 33 interconnected barriers or 198.5 ft. (60.4 m). Each barrier must be ballasted to capacity with an approximate weight of 1,666 lbs (755.7 kg). Installation instructions are supplied with barrier system. Barrier maintains an 11 ft. maximum deflection at 65 mph – the lowest of all water barriers. Can be set up in a radius of 15° in each direction, if desired.

### MB350 Kit:

The MB350 Kit is a reinforcement system for the MB350 safety barrier that distributes and transfers forces that may occur upon impact of a vehicle so that the overall safety barrier system has containment and positive protection capabilities. The upper and lower longitudinal pipes are attached to the barrier individually through molded channels in both the top and lower sections of the barrier. The upper longitudinal pipes and the lower longitudinal pipes are welded to flat steel straps. These pipe assemblies are supported and secured to each barrier by steel rods protruding through molded channels in the top section of the barrier.



### COLORS:

Orange with orange kit. Special colors available with minimum order

### COMPOSITION:

UV resistant LLDPE plastic

### SIZE:

Height: 42" / 106.6 cm  
Length: 72" / 182.8 cm  
Width: 24" / 60.9 cm

### WEIGHT:

Empty: 125 lbs. / 56.7 kg  
Full: 1666 lbs. / 755.7 kg

### WATER BALLAST:

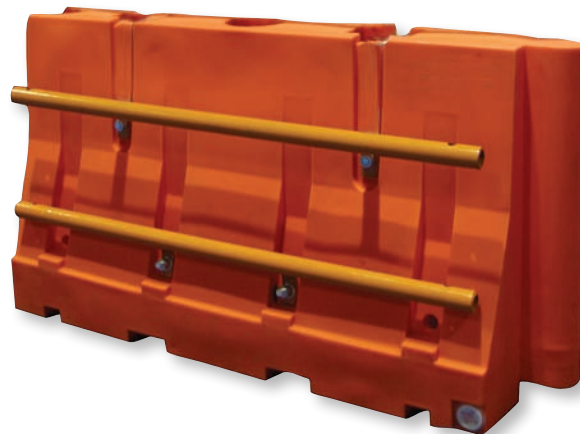
185 gallons / 700 liters

### WEIGHT with KIT:

Add 150 lbs. / 68 liters

### KIT COMPOSITION:

2" diameter steel



### Certifications:

- Meets MUTCD specification 6F.65, 6F.68 and 6F.81 as a portable barrier.
- Meets NCHRP-350 requirements at Test Level 3 (TL3) as a portable barrier.
- Approved by FHWA as a portable barrier.
- FHWA acceptance letter B34G. (See our website.)